

液晶模组规格书

LCM Specification

- 初定规格 Preliminary specification
- 正式规格 Official specifications

项目编号 Project No.	TFT-H101A9 系列
产品描述 Product Description	TFT LCD Module 1024 x 3RGB x 600 Dots 10.1 Inch TFT LCD
客户确认签章: Signature by customer:	
<input type="checkbox"/> 小批量试产 Trial production	<input type="checkbox"/> 大批量生产 Mass production

鑫洪泰科技 (广东) 有限公司

深圳市鑫洪泰电子科技有限公司

广东省深圳市龙岗区龙岗天安数码城 3 栋 B 座 1202-G

广东省东莞市凤岗镇东深公路 208 号天安数码城 N3 栋 3 楼



文档修订记录 Document revision history :

版本 Version	日期 DATE	修改说明 Modify description	编制 PREPARED BY
0-0	2020-10-19	初次编制 First compilation.	Liu. YL
2-0	2022-03-11	使用新的规格格式 Use the new specification format	Liu. YL





一、基本特征 General Feature:

项目 Item	标准值 Standard Value	单位 Unit
显示尺寸 Display Size	10.1	英寸 Inch
分辨率 Number of Pixels	1024 (H) *3(RGB)* 600 (V)	点 dots
显示区域 Active Area	222.72 (H) * 125.28 (V)	毫米 mm
外形尺寸 Outline Dimension	235.00(H) * 143.00(V) * 5.30(D) <TFT> 235.00(H) * 143.00(V) * 6.90(D)) <TFT+RTP> 235.00(H) * 143.00(V) * 6.95(D)) <TFT+CTP>	毫米 mm
观看方向 Viewing Direction	全视角 FULL 0'clock	-
TFT 接口 TFT Interface	LVDS (VESA 标准 VESA standard)	-
TFT 驱动芯片 TFT Driver IC	EK79001+EK73215	-
TFT 驱动电压 TFT Driver Condition	VCI=3.3V(Typ)	伏 V
背光 Backlight	白色 LED/42 颗/6 LEDs 串联 7 路并联 White LED/42 PCS/6 LEDs serial 7 ways parallel	-
触摸屏 Touch Panel	<input checked="" type="checkbox"/> 不带触摸屏 <input checked="" type="checkbox"/> 带电阻触摸屏 <input checked="" type="checkbox"/> 带电容触摸屏 Without TP With RTP With CTP	-
电容触摸屏驱动芯片 CTP Driver IC	GT9271	-
电容触摸屏驱动电压 CTP Driver Condition	VDD=3.3V(Typ)	伏 V
TFT 液晶工作温度 Operation Temperature	-20 ~ 70	摄氏度 °C
TFT 液晶储存温度 Storage Temperature	-30 ~ 80	摄氏度 °C



HOT-HMI

Shenzhen Hot Display Technology Co., Ltd

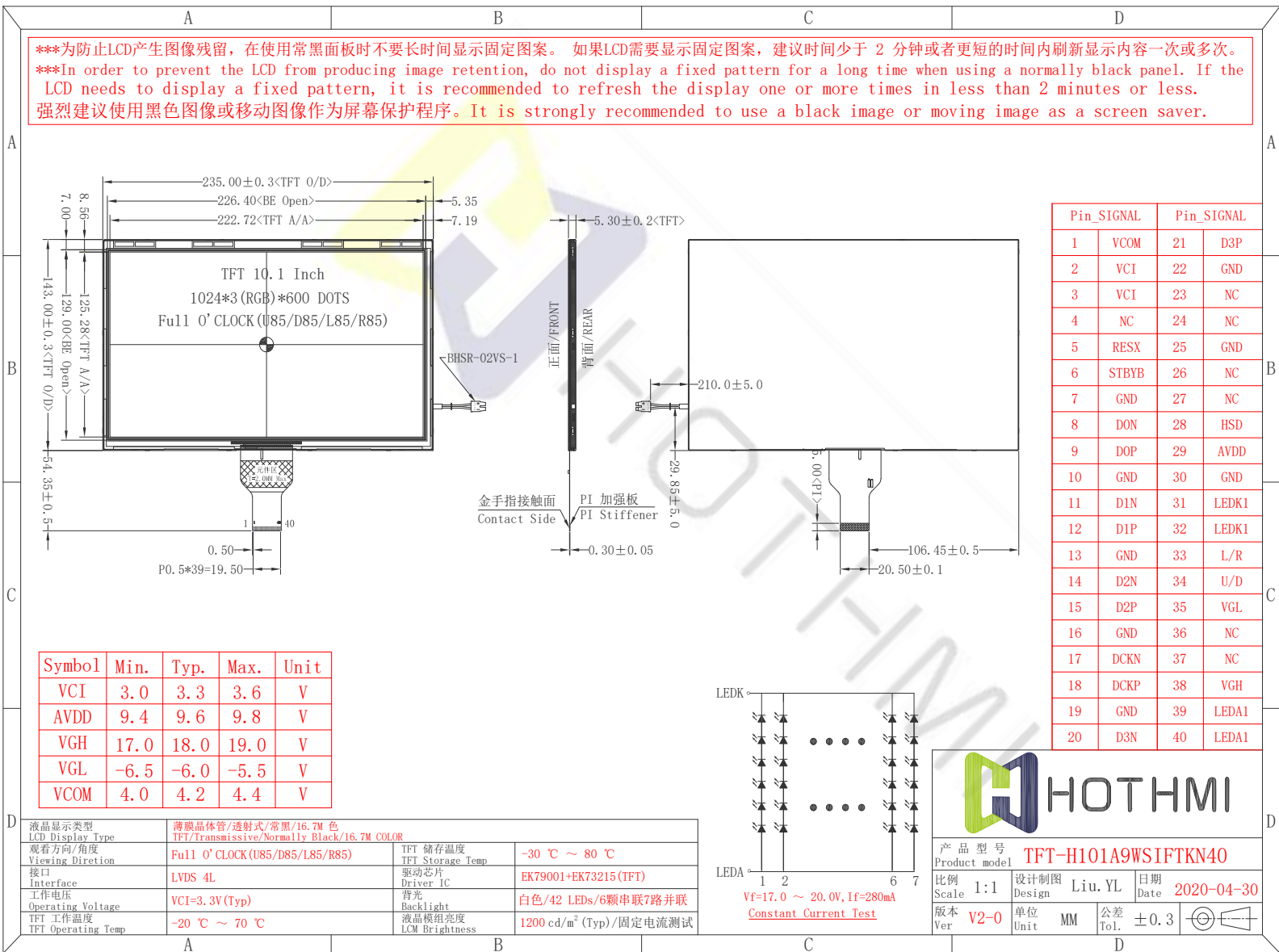
TFT-H101A9 系列

Rev:2-0

2022年03月11日

二、外形尺寸 Outline Dimensions

I: TFT-H101A9WSIFTKN40_V2-0 (Without TP)





HOT-HMI

Shenzhen Hot Display Technology Co., Ltd

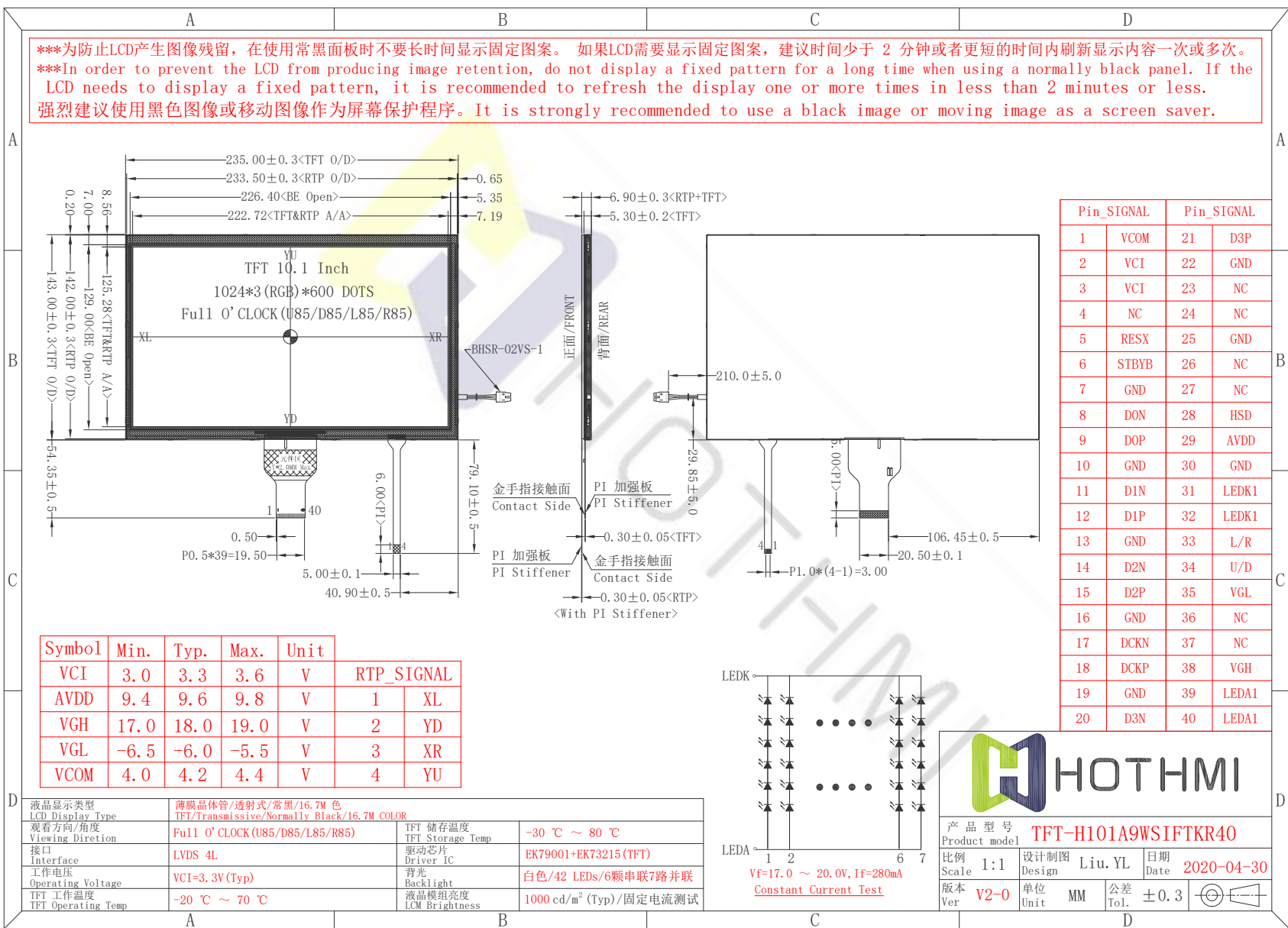
TFT-H101A9 系列

Rev:2-0

2022年03月11日

II: TFT-H101A9WSIFTR40_V2-0 (With RTP)

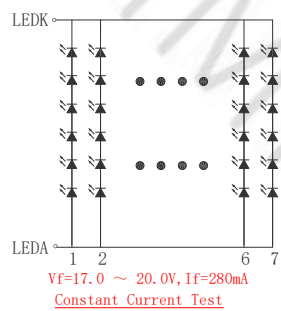
***为防止LCD产生图像残留，在使用常黑面板时不要长时间显示固定图案。如果LCD需要显示固定图案，建议时间少于2分钟或者更短的时间内刷新显示内容一次或多次。
 ***In order to prevent the LCD from producing image retention, do not display a fixed pattern for a long time when using a normally black panel. If the LCD needs to display a fixed pattern, it is recommended to refresh the display one or more times in less than 2 minutes or less.
 强烈建议使用黑色图像或移动图像作为屏幕保护程序。It is strongly recommended to use a black image or moving image as a screen saver.



Pin_SIGNAL	Pin_SIGNAL	Pin_SIGNAL	Pin_SIGNAL
1	VCOM	21	D3P
2	VCI	22	GND
3	VCI	23	NC
4	NC	24	NC
5	RESX	25	GND
6	STBYB	26	NC
7	GND	27	NC
8	DON	28	HSD
9	DOP	29	AVDD
10	GND	30	GND
11	D1N	31	LEDK1
12	D1P	32	LEDK1
13	GND	33	L/R
14	D2N	34	U/D
15	D2P	35	VGL
16	GND	36	NC
17	DCKN	37	NC
18	DCKP	38	VGH
19	GND	39	LEDA1
20	D3N	40	LEDA1

Symbol	Min.	Typ.	Max.	Unit	RTP_SIGNAL	
VCI	3.0	3.3	3.6	V	1	XL
AVDD	9.4	9.6	9.8	V	2	YD
VGH	17.0	18.0	19.0	V	3	XR
VGL	-6.5	-6.0	-5.5	V	4	YU
VCOM	4.0	4.2	4.4	V		

液晶显示类型 LCD Display Type	薄膜晶体管/透射式/常黑/16.7M 色 TFT/Transmissive/Normally Black/16.7M COLOR	TFT 储存温度 TFT Storage Temp	-30 °C ~ 80 °C
观看方向/角度 Viewing Direction	Full 0' CLOCK (U85/D85/L85/R85)	驱动芯片 Driver IC	EK79001+EK73215 (TFT)
接口 Interface	LVDS 4L	背光 Backlight	白色/42 LEDs/6颗串联7路并联
工作电压 Operating Voltage	VCI=3.3V(Typ)	液晶模组亮度 LCM Brightness	1000 cd/m ² (Typ)/固定电流测试
TFT 工作温度 TFT Operating Temp	-20 °C ~ 70 °C		



产品型号: TFT-H101A9WSIFTR40
 设计制图: Liu, YL
 日期: 2020-04-30
 版本: V2-0
 单位: MM
 公差: ±0.3



HOT-HMI

Shenzhen Hot Display Technology Co., Ltd

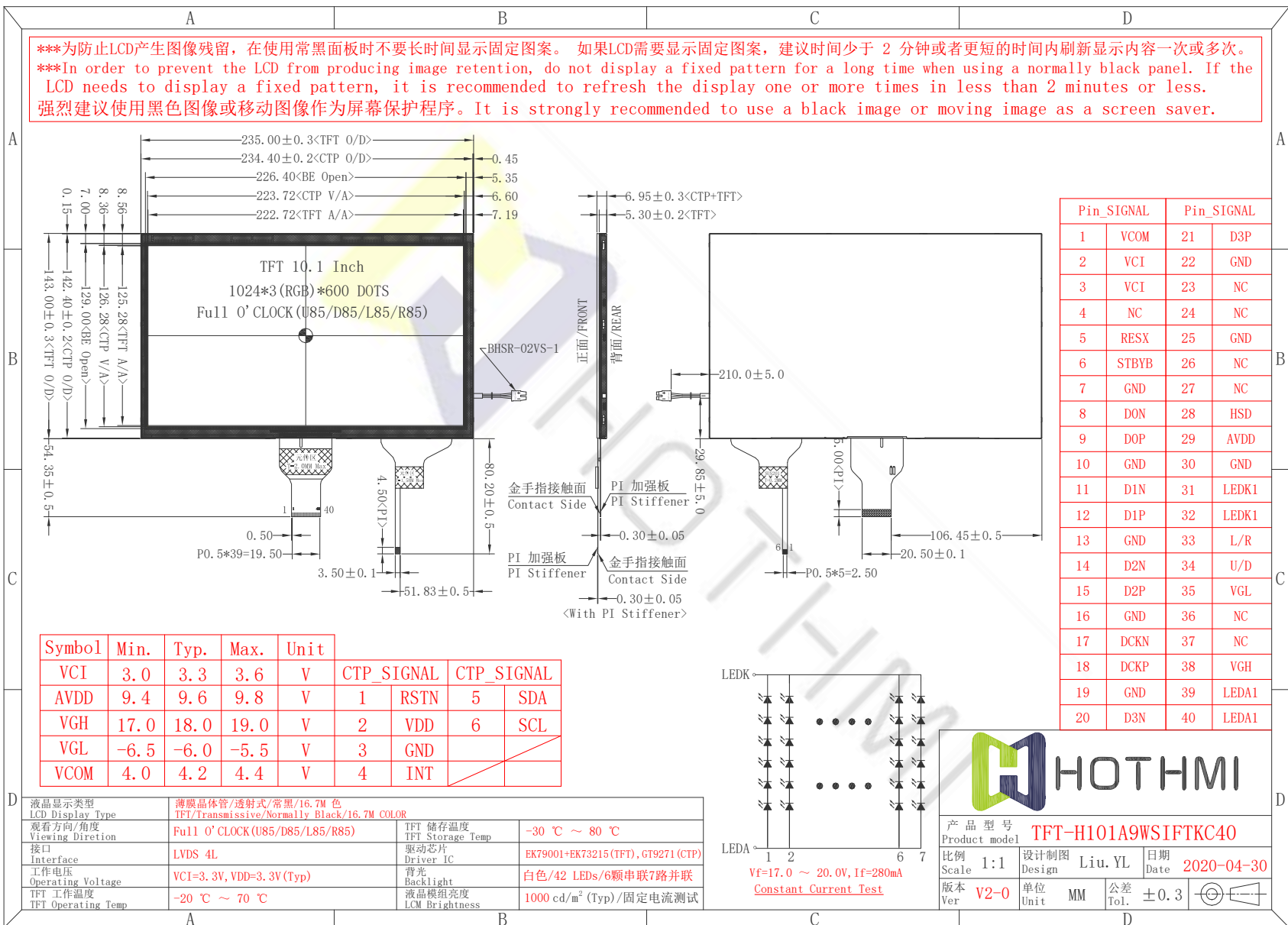
TFT-H101A9 系列

Rev:2-0

2022年03月11日

III: TFT-H101A9WSIFTKC40_V2-0 (With CTP)

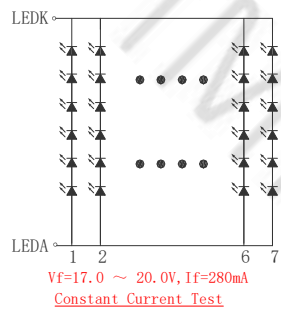
***为防止LCD产生图像残留, 在使用常黑面板时不要长时间显示固定图案。 如果LCD需要显示固定图案, 建议时间少于 2 分钟或者更短的时间内刷新显示内容一次或多次。
 ***In order to prevent the LCD from producing image retention, do not display a fixed pattern for a long time when using a normally black panel. If the LCD needs to display a fixed pattern, it is recommended to refresh the display one or more times in less than 2 minutes or less.
 强烈建议使用黑色图像或移动图像作为屏幕保护程序。 It is strongly recommended to use a black image or moving image as a screen saver.



Pin_SIGNAL	Pin_SIGNAL	Pin_SIGNAL	Pin_SIGNAL
1	VCOM	21	D3P
2	VCI	22	GND
3	VCI	23	NC
4	NC	24	NC
5	RESX	25	GND
6	STBYB	26	NC
7	GND	27	NC
8	DON	28	HSD
9	DOP	29	AVDD
10	GND	30	GND
11	D1N	31	LEDK1
12	D1P	32	LEDK1
13	GND	33	L/R
14	D2N	34	U/D
15	D2P	35	VGL
16	GND	36	NC
17	DCKN	37	NC
18	DCKP	38	VGH
19	GND	39	LEDA1
20	D3N	40	LEDA1

Symbol	Min.	Typ.	Max.	Unit	CTP_SIGNAL	CTP_SIGNAL
VCI	3.0	3.3	3.6	V	1	5
AVDD	9.4	9.6	9.8	V	RSTN	SDA
VGH	17.0	18.0	19.0	V	2	6
VGL	-6.5	-6.0	-5.5	V	3	SCL
VCOM	4.0	4.2	4.4	V	4	INT

液晶显示类型 LCD Display Type	薄膜晶体管/透射式/常黑/16.7M 色 TFT/Transmissive/Normally Black/16.7M COLOR		
观看方向/角度 Viewing Direction	Full 0' CLOCK (U85/D85/L85/R85)	TFT 储存温度 TFT Storage Temp	-30 °C ~ 80 °C
接口 Interface	LVDS 4L	驱动芯片 Driver IC	EK79001+EK73215 (TFT), GT9271 (CTP)
工作电压 Operating Voltage	VCI=3.3V, VDD=3.3V (Typ)	背光 Backlight	白色/42 LEDs/6颗串联7路并联
TFT 工作温度 TFT Operating Temp	-20 °C ~ 70 °C	液晶模组亮度 LCM Brightness	1000 cd/m ² (Typ)/固定电流测试



HOT-HMI

产品型号
Product model: **TFT-H101A9WSIFTKC40**

比例
Scale: 1:1

设计制图
Design: Liu. YL

日期
Date: 2020-04-30

版本
Ver: V2-0

单位
Unit: MM

公差
Tol.: ±0.3



三、引脚说明 Pin Description

3.1. 模组引脚说明 TFT Pin Description

引脚编号 Pin NO.	标号 Symbol	详细描述 Description
1	VCOM	TFT Common Electrode Voltage
2~3	VCI	Digital Power
4	NC	No Connect
5	RESX	Global reset pin. Active low to enter reset state. Usually pulled high. For stability, an RC delay circuit needs to be connected externally. (RESX delay VCI greater than 1ms)
6	STBYB	Standby mode, normally pull high. STBYB = "VCI", normal operation STBYB = "GND", Standby mode
7	GND	Ground
8	D0N	LVDS negative differential data
9	D0P	LVDS positive differential data
10	GND	Ground
11	D1N	LVDS negative differential data
12	D1P	LVDS positive differential data
13	GND	Ground
14	D2N	LVDS negative differential data
15	D2P	LVDS positive differential data
16	GND	Ground
17	DCKN	LVDS negative differential clock
18	DCKP	LVDS positive differential clock
19	GND	Ground
20	D3N	LVDS negative differential data
21	D3P	LVDS positive differential data
22	GND	Ground
23~24	NC	No Connect
25	GND	Ground
26~27	NC	No Connect
28	HSD	Data channel selection STBYB = "VCI", 6 bit STBYB = "GND", 8 bit
29	AVDD	Analog Power
30	GND	Ground

- Next page -



引脚编号 Pin NO.	标号 Symbol	详细描述 Description
31~32	LEDK	LED Cathode, Not connected here
33	L/R	Horizontal scan direction control pin L/R= "VCI", From left to right (Default) L/R= "GND", From right to left
34	U/D	Vertical scan direction control pin U/D= "VCI", From down to up. U/D= "GND", From up to down. (Default)
35	VGL	TFT Gate OFF Voltage
36~37	NC	No Connect
38	VGH	TFT Gate ON Voltage
39~40	LEDA	LED Anode, Not connected here
- - - - - END - - - - -		

3.2. CTP 引脚说明 CTP Pin Description

引脚编号 Pin NO.	标号 Symbol	详细描述 Description
1	RSTN	An external low signal reset the chip.
2	VDD	Digital Power
3	GND	Ground
4	INT	Interrupt signal
5	SDA	IIC data signal
6	SCL	IIC clock signal
- - - - - END - - - - -		

3.3. RTP 引脚说明 RTP Pin Description

引脚编号 Pin NO.	标号 Symbol	详细描述 Description
1	XL	X-axis measuring foot
2	YD	Y-axis measuring foot
3	XR	X-axis measuring foot
4	YU	Y-axis measuring foot
- - - - - END - - - - -		



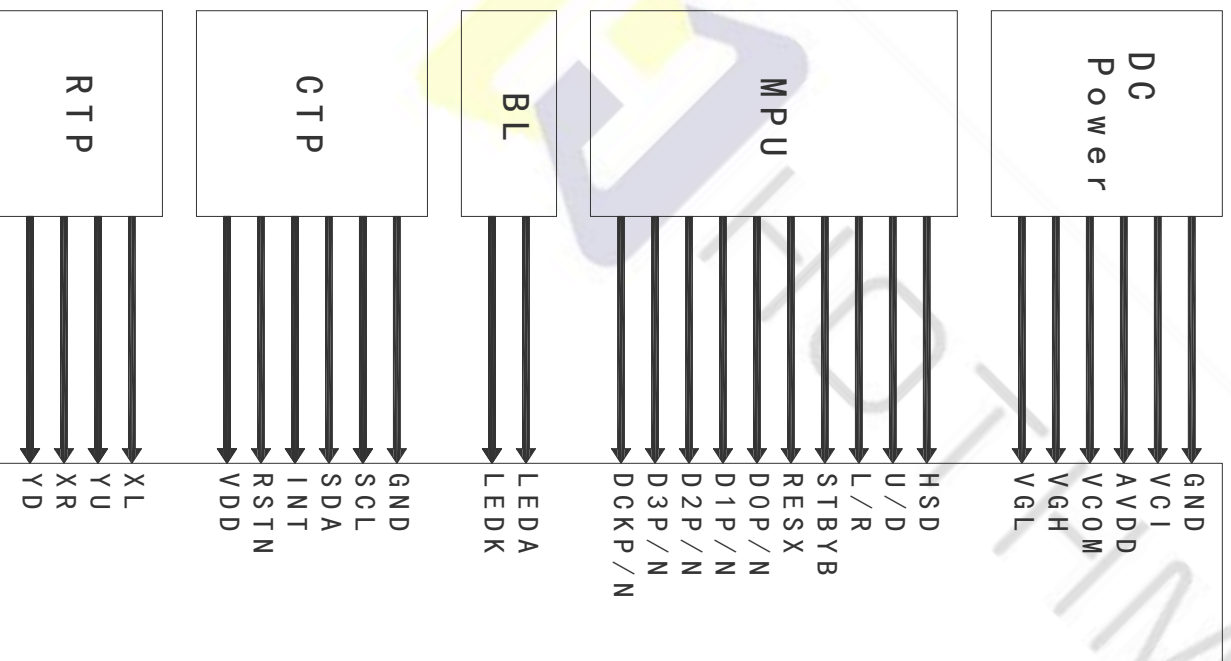
3.4. 背光引脚说明 Backlight pin description

引脚编号 Pin NO.	标号 Symbol	详细描述 Description
1	LEDA	LED Anode, red line or white line
2	LEDK	LED Cathode, black line
--- END ---		

连接器型号 Connector Model Number: BHSR-02VS-1

配合型号 Mating Model Number: BHSMR-02VS

3.5. 接线说明 Wiring instructions





四、电气特性 Electrical Characteristics

4.1. TFT 绝对最大额定值 TFT Absolute Maximum Ratings

项目 Item	标号 Symbol	条件 Condition	最小值 Min	典型值 Type	最大值 Max	单位 Unit
数字电源 Digital Power	VCI	-	-0.3	-	4.0	伏 V
模拟电源 Analog Power	AVDD	-	-0.3	-	15.0	伏 V
输入电压范围 Input Voltage Range	VIN	-	0	-	VCI	伏 V

注释 Note:

1. 超过上面列出的极限值可能会导致驱动 IC 永久损坏。这些值仅用于测试。IC 应在芯片特性条件下正常运行。如果不满足这些条件，IC 操作可能会出错，可靠性可能会下降。That the exceeds the Limiting Value listed above it may cause the driver IC permanent damage. These values are for test only. IC should be operated under the Chip Characteristic conditions for normal operation. If these conditions are not met, IC operation may be error and the reliability may be deteriorated.
2. 参数在工作温度范围内有效，除非另有说明。除非另有说明，所有电压均相对于 GND。Parameters are valid over operating temperature range unless otherwise specified. All voltages are with respect to GND unless otherwise noted.

4.2. TFT 模组工作条件 TFT LCD Module Operating Conditions

项目 Item	标号 Symbol	条件 Condition	最小值 Min	典型值 Type	最大值 Max	单位 Unit
数字电源 Digital Power	VCI	-	3.0	3.3	3.6	伏 V
模拟电源 Analog Power	AVDD	-	9.4	9.6	9.8	伏 V
TFT 栅极导通电压 TFT Gate ON Voltage	VGH	VGH-VGL <=40V	17.0	18.0	19.0	伏 V
TFT 栅极关断电压 TFT Gate OFF Voltage	VGL		-6.5	-6.0	-5.5	伏 V
TFT 公共电极电压 TFT Common Electrode Voltage	VCOM	-	4.0	4.2	4.4	伏 V



4.3. 背光工作条件 LED back light specification

项目 Item	标号 Symbol	条件 Condition	最小值 Min	典型值 Type	最大值 Max	单位 Unit
工作电压 Forward voltage	VF	If=3.2V/40mA	17.0	19.2	20.0	伏 V
工作电流 Forward current	IF	/1-chip	-	280	-	毫安 mA
亮度 (带 LCD) Luminance (With	Lv	Without TP	-	1200	-	坎德拉/平方米 cd/m ²
		With TP	-	1000	-	
LED 寿命 LED life time	Hr	Ta=25±3 °C	20,000	30,000	-	小时 Hour

注释 Note:

- LED 寿命 (Hr) 定义为在 Ta=25±3 °C, 上表所示的典型电压电流值条件下持续工作直至亮度低于 50% 的时间。LED life time (Hr) can be defined as the time in which it continues to operate under the condition: Ta=25±3 °C, typical IL value indicated in the above table until the brightness becomes less than 50%.
- 以上结果是按MTBF计算方式预估判定的LED失效时间, 实际测试LED在Ta=25±3 °C点亮5000H, 亮度衰减 8%. The above results are estimated and judged by the MTBF calculation method of the LED failure time. The actual test LED is lit for 5000H at Ta=25±3 °C, and the brightness decays by 8%.



五、液晶光学规格 TFT OPTICAL SPECIFICATION

5.1 概述 Overview

光学规格的测试应在暗室（环境亮度 1lux，温度=25 2°C）中使用亮度计系统（测角仪系统和TOPCON BM-5）设备进行测量，测试单元应位于大约在 θ 和 Φ 等于 0 的视角下，距 LCD 表面 50cm 的距离。显示面上测量点的中心应保持固定。测量前背光应工作 30 分钟。

The test of Optical specifications shall be measured in a dark room (ambient Luminance 1lux and temperature = 25 2°C) with the equipment of Luminance meter system (Goniometer system and TOPCON BM-5) and test unit shall be located at an approximate distance 50cm from the LCD surface at a viewing angle of θ and Φ equal to 0 . The center of the measuring spot on the Display surface shall stay fixed. The backlight should be operating for 30 minutes prior to measurement.

5.2 光学规格 Optical Specifications

参数 Parameter	标号 Symbol	条件 Condition	最小值 Min.	典型值 Typ.	最大值 Max.	单位 Unit	备注 Remark
视角范围 Viewing Angle Range	水平 Horizontal	CR>10	-	85	-	Deg.	Note 1
	垂直 Vertical		-	85	-	Deg.	
			-	85	-	Deg.	
对比度 Contrast ratio	CR	$\Theta = 0^\circ$	-	800	-	-	Note2
色域 Color Gamut	CG	CIE1931	-	50	-	%	
白色色度 White Chromaticity	Wx	$\Theta = 0^\circ$	-	0.307	-	-	
	Wy		-	0.338	-	-	
	Rx		-	0.605	-	-	
色彩还原 Reproduct ion of color	红 Red	Ry	-0.03	0.336	+0.03	-	Note4 (Based on C Light)
		Gx		0.297		-	
	Gy	0.552		-			
	Bx	0.139		-			
	By	0.132		-			
响应时间 (上升 + 下降) Response Time (Rising + Falling)	Tr+Tf	$\Theta = 0^\circ$ Ta= 25°C	-	30	40	ms	Note5

注释 Note:

1. 视角是对比度大于10的角度。视角确定为相对于光轴的水平或3、9点钟方向和垂直或6、12点钟方向 垂直于 LCD 表面（见图 1）。

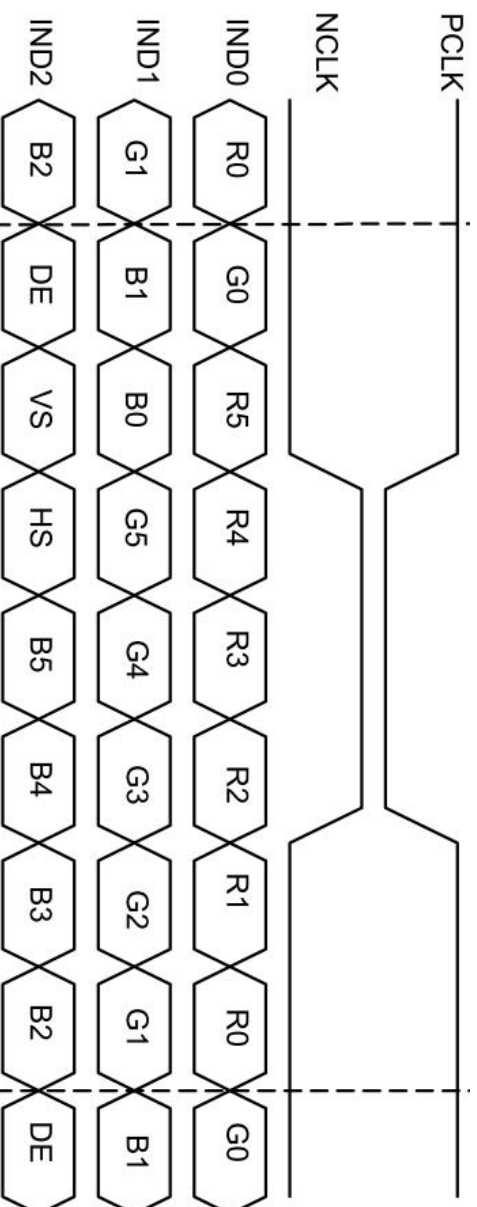
Viewing angle is the angle at which the contrast ratio is greater than 10. The viewing angles are determined for the horizontal or 3, 9 o' clock direction and the vertical or 6, 12 o' clock direction with respect to the optical axis which is normal to the LCD surface (see FIGURE 1).



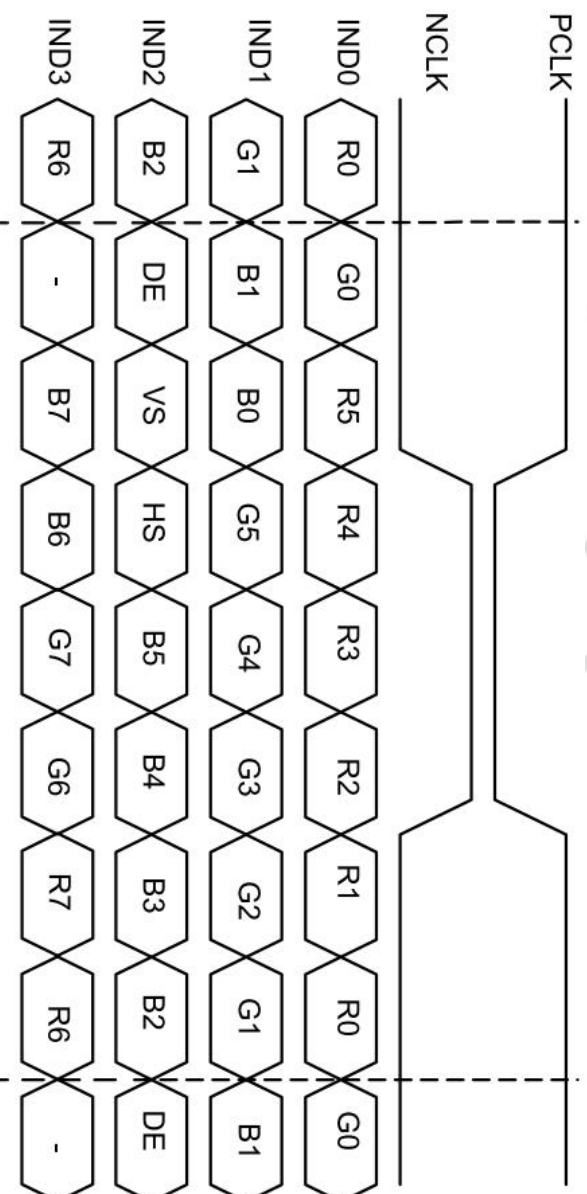
六、接口时序 Interface Timings

6.1. LVDS 的数据输入格式 Data Input Format for LVDS

6.1.1. 6 位 LVDS 输入 6-bit LVDS input



6.1.2. 8 位 LVDS 输入 8-bit LVDS input





6.2. RGB 时序特性 RGB Timing Characteristic

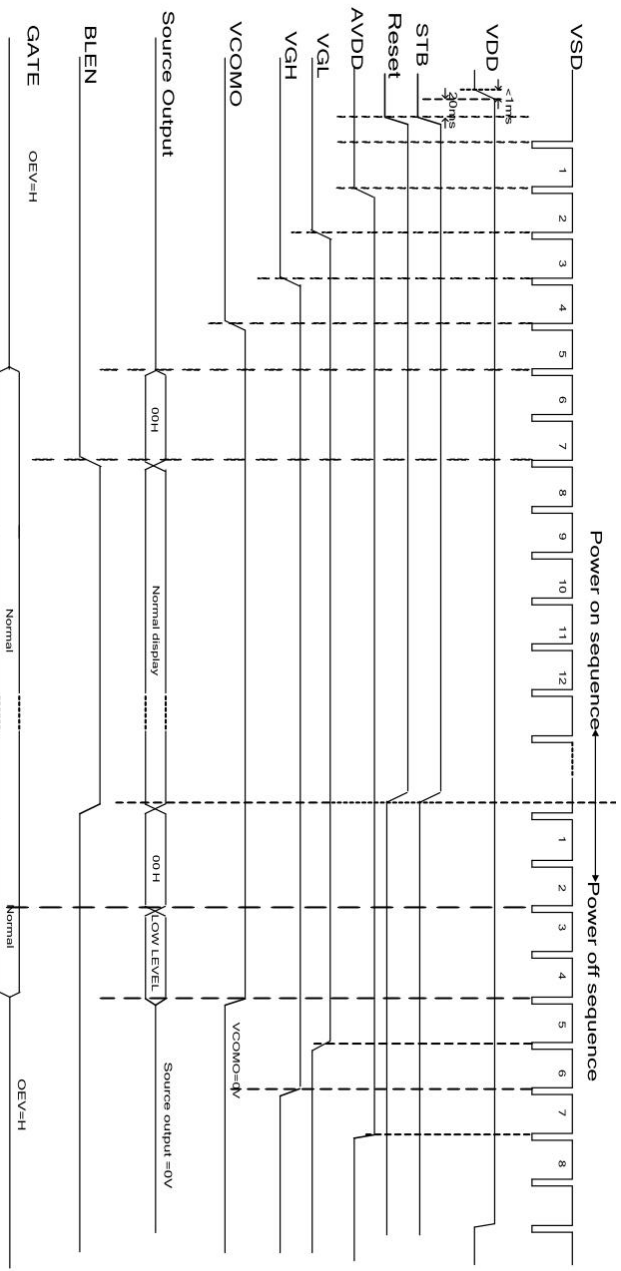
DE mode					
Parameter	Symbol	Value			Unit
		Min.	Typ.	Max.	
DCLK frequency @Frame rate=60hz	fcfk	40.8	51.2	67.2	Mhz
Horizontal display area	thd	1024			DCLK
HSYNC period time	th	1114	1344	1400	DCLK
HSYNC blanking	thb+thfp	90	320	376	DCLK
Vertical display area	tvd	600			H
VSYNC period time	tv	610	635	800	H
VSYNC blanking	tvb+tvfp	10	35	200	H

HV mode					
Horizontal input timing					
Parameter	Symbol	Value			Unit
		Min.	Typ.	Max.	
Horizontal display area	thd	1024			DCLK
DCLK frequency@ Frame rate=60hz	fcfk	44.9	51.2	63	Mhz
1 Horizontal Line	th	1200	1344	1400	DCLK
		Min.	1		
		Typ.	—		
		Max.	140		
HSYNC pulse width	thpw				DCLK
HSYNC back porch	thbp	160	160	160	
HSYNC front porch	thfp	16	160	216	

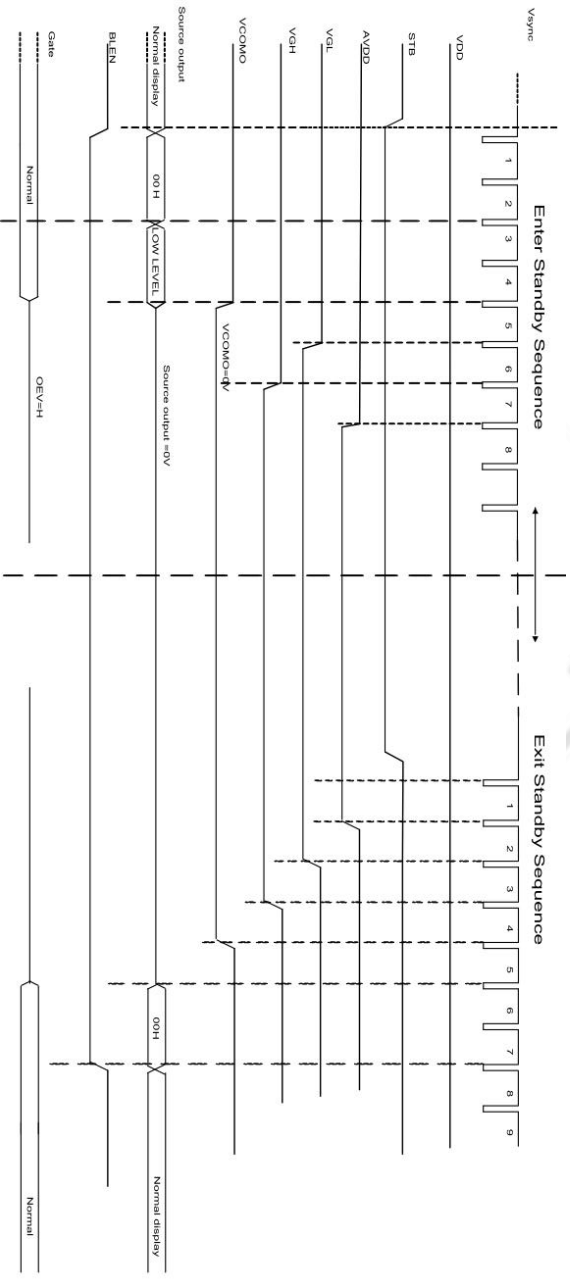
Vertical input timing					
Parameter	Symbol	Value			Unit
		Min.	Typ.	Max.	
Vertical display area	tvd	600			H
VSYNC period time	tv	624	635	750	H
VSYNC pulse width	tvpw	1	—	20	H
VSYNC back porch	tvb	23	23	23	H
VSYNC front porch	tvfp	1	12	127	H



6.3. 开机/关机时序 Power-On/Off Timing Sequence



6.4. 进入和退出待机模式时序图 Enter and Exit Standby Mode timing chart





七、可靠性测试 RELIABILITY TEST

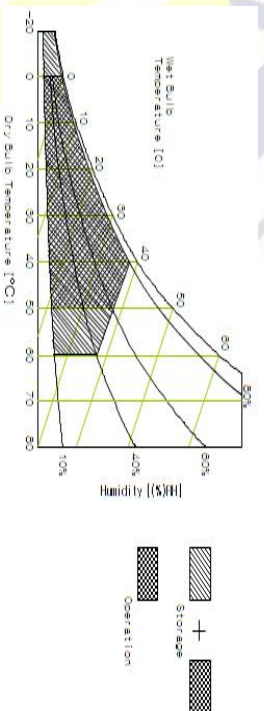
7-1 温度和湿度 Temperature and Humidity

测试项目 TEST ITEMS	条件 CONDITIONS	注释 NOTE
高温储存 High Temperature Storage	Ta=+80°C, 120hrs	
低温储存 Low Temperature Storage	Ta=-30 °C, 120hrs	
高温运行试验 High Temperature Operation	Ta=+70 °C, 120hrs	
低温运行试验 Low Temperature Operation	Ta=-20 °C, 120hrs	
高温高湿 (运行测试) High Temperature and High Humidity (Operating)	Ta=+60 °C, 90%RH Max, 120hrs	

注释 Note:

1. 液晶驱动电压。由于液晶材料的特性，该电压随环境温度而变化。Liquid Crystal driving voltage. Due to the characteristics of LC Material, this voltage varies with environmental temperature.

2. 温度和相对湿度范围如下图所示。湿球温度最高应为39°C。并且没有冷凝水。Temperature and relative humidity range are shown in the figure below. Wet bulb temperature should be 39 °C max. and no condensation of water.



3. 产品经可靠性测试后，仅保证功能正常，无任何致命缺陷（不显示、线路缺陷、显示异常等）。After the reliability test, the product only guarantee function normally without any fatal defect(non-display, line defect, abnormal display etc).

4. 所有显示判断均在面板温度恢复到室温两小时后进行 All display judgments are performed two hours after the panel temperature returns to room temperature

5. Ta: 环境温度/度 Ambient temperature



7-2 冲击和振动 Shock and Vibration

测试项目 TEST ITEMS	条件 CONDITIONS
包装冲击 (非操作) Packing Shock (Non-Operation)	<ul style="list-style-type: none">● Shock level:980m/s²● Waveform:1/2 Sine wave, 6msec● ±X, ±Y ±Z, each axis 1 times
包装振动 (非操作) Packing Vibration (Non-Operation)	<ul style="list-style-type: none">● Frequency range:8-33.3HZ● Stoke:1.0mm● Sweep: 10Hz-50Hz● x, y, z 2 hours for each direction

7-3 静电放电测试 Electrostatic Discharge

测试项目 TEST ITEMS	条件 CONDITIONS
ESD (Non-operation)	150pF, 330 Ω , Contact±2KV, Air : ±4KV.Note 1 200pF, 0 Ω , ±200V Contact test.Note 2

测量点 Measure Point:

1. LCD玻璃和金属边框 LCD glass and metal bezel
2. 连接器引脚 IF connector pins



八、处理和注意事项 HANDLING & CAUTIONS

8-1 操作注意事项 Caution For Operation

◆由于液晶模组是玻璃材质，请勿对其施加强烈的机械冲击或静载荷。请小心搬运，因为冲击、振动和粗心的搬运可能会严重影响产品。如果从高处坠落或受到强烈冲击，玻璃可能碎了。

Since the LCM is made of glass, do not apply strong mechanical impact or static load onto it. Handling with care since shock, vibration, and careless handling may seriously affect the product. If it falls from a high place or receives a strong shock, the glass maybe broken.

◆在规定的电压限制内驱动 LCM 是必不可少的，因为高于限制的电压会导致 LCM 的寿命缩短。由直流引起的电化学反应会导致 LCM 出现不良劣化，因此应避免使用直流驱动。

It is indispensable to drive the LCM within the specified voltage limit since the higher voltage than the limit causes LCM's life shorter. An electro-chemical reaction due to DC causes undesirable deterioration of the LCM so that the use of DC drive should avoid.

◆请勿在电源开启时将 LCM 连接到系统或从系统断开连接。

Do not connect or disconnect the LCM to or from the system when power is on.

◆切勿在高温高湿的异常条件下使用 LCM。

Never use the LCM under abnormal conditions of high temperature and high humidity.

◆当暴露于剧烈的温度波动（热到冷或冷到热）时，LCM可能会受到影响；具体来说，从冷到热的剧烈温度波动会在 LCM 表面产生露水，这可能会影响 LCM 上偏振片的运行。

When expose to drastic fluctuation of temperature(hot to cold or cold to hot), the LCM may be affected; specifically, drastic temperature fluctuation from cold to hot, produces dew on the LCM's surface which may affect the operation of the polarizer on the LCM.

◆在低于工作温度范围的温度下，响应时间将极度延迟，另一方面，在高于其工作范围的温度下，LCM 可能会变黑。然而，这些现象并不意味着 LCM 出现故障或故障。一旦温度恢复到正常运行的推荐温度范围，LCM 将恢复正常运行。

Response time will be extremely delay at lower temperature than the operating temperature range and on the other hand LCM may turn black at temperature above its operational range. However those phenomenon do not mean malfunction or out of order with the LCM. The LCM will revert to normal operation once the temperature returns to the recommended temperature range for normal operation.

◆为防止LCD产生图像残留，在使用常黑面板时不要长时间显示固定图案。如果LCD需要显示固定图案，建议时间少于 2 分钟或者更短的时间内刷新显示内容一次或多次。强烈建议使用黑色图像或移动图像作为屏幕保护程序。

In order to prevent the LCD from producing image retention, do not display a fixed pattern for a long time when using a normally black panel. If the LCD needs to display a fixed pattern, it is recommended to refresh the display one or more times in less



than 2 minutes or less. It is strongly recommended to use a black image or moving image as a screen saver.

8-2 防静电措施 Caution Against Static Charge

◆LCM 使用 C-MOS LSI 驱动器，因此建议客户将任何未使用的输入端连接到 Vdd 或 Vss，上电前不要输入任何信号，并将您的身体、工作/装配区、装配设备接地 防止静电。

The LCM use C-MOS LSI drivers, so customers are recommended that any unused input terminal would be connected to Vdd or Vss, do not input any signals before power is turn on, and ground you body, work/assembly area, assembly equipments to protect against static electricity.

◆缓慢去除保护膜，保持去除方向与面板表面不垂直约 30 度，如有可能，在离子风机等 ESD 控制装置下，工作室内湿度应保持在 50%RH 以上，以减少静电风险

Remove the protective film slowly, keeping the removing direction approximate 30-degree not vertical from panel surface, if possible, under ESD control device like ion blower, and the humidity of working room should be kept over 50%RH to reduce the risk of static charge.

◆避免使用合成纤维制成的工作服。我们推荐棉质衣服或其他经过导电处理的纤维。Avoid the use work clothing made of synthetic fibers. We recommend cotton clothing or other conductivity-treated fibers.

◆在处理 LCM 时，请戴上不带电材料的手套。对地导电手腕和对地导电鞋是必需的 In handling the LCM, wear non-charged material gloves. And the conducting wrist to the earth and the conducting shoes to the earth are necessary

---END---